

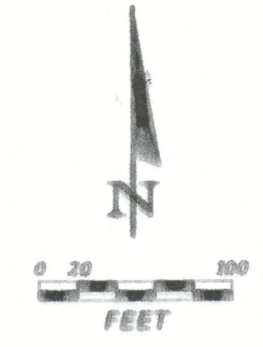
WINDSWEPT INDUSTRIAL SUBDIVISION UNIT 7

IN SECTION 24
TOWNSHIP 4 SOUTH, RANGE 16 EAST
COLUMBIA COUNTY, FLORIDA

DESCRIPTION:

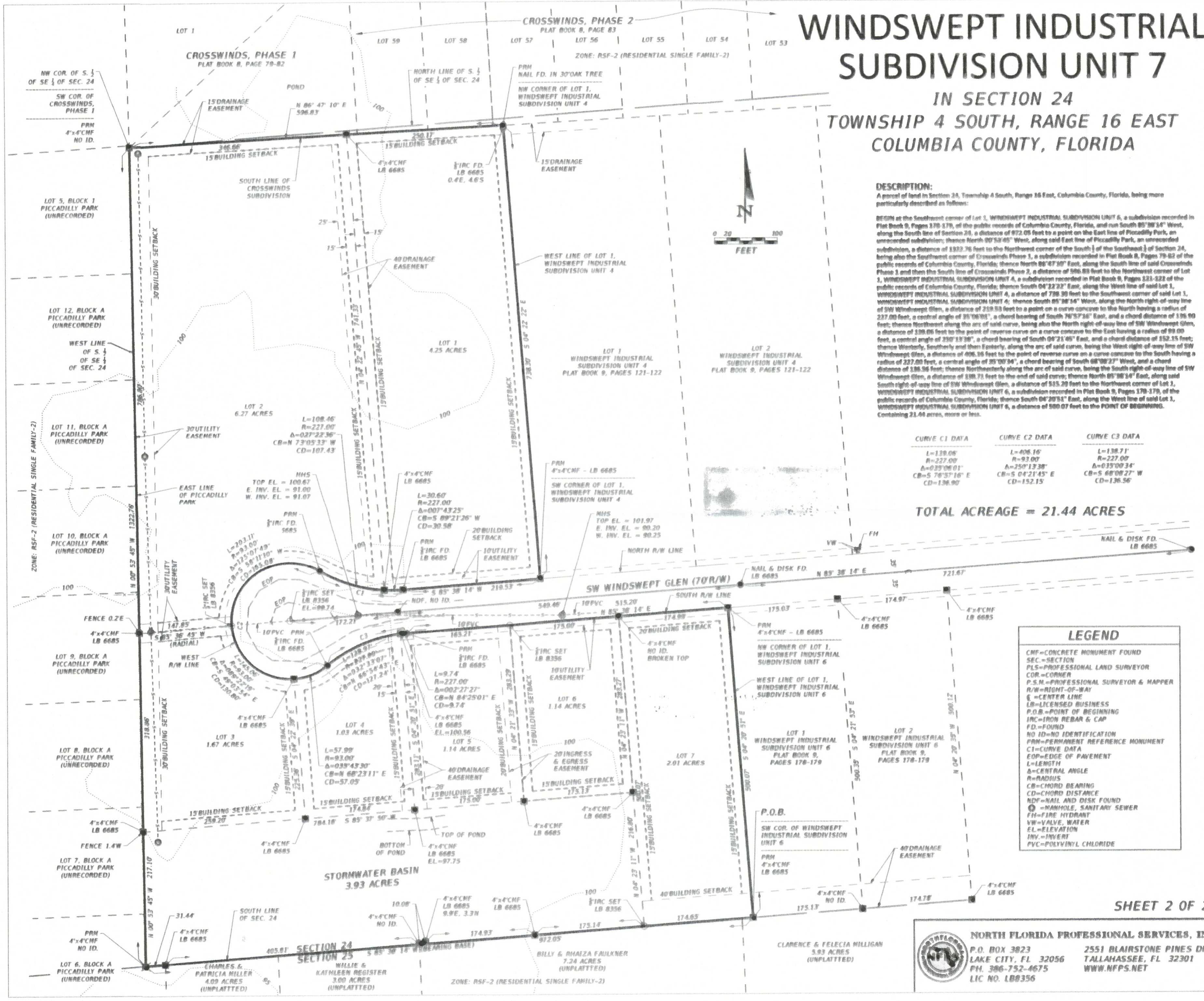
A parcel of land in Section 24, Township 4 South, Range 16 East, Columbia County, Florida, being more particularly described as follows:

BEGIN at the Southeast corner of Lot 1, WINDSWEPT INDUSTRIAL SUBDIVISION UNIT 6, a subdivision recorded in Plat Book 9, Pages 178-179, of the public records of Columbia County, Florida, and run South 85° 38' 14" West, along the South line of Section 24, a distance of 872.05 feet to a point on the East line of Piccadilly Park, an unrecorded subdivision, thence North 90° 58' 45" West, along said East line of Piccadilly Park, an unrecorded subdivision, a distance of 1932.75 feet to the Northwest corner of the South 1/4 of Section 24, being also the Southwest corner of Crosswinds Phase 1, a subdivision recorded in Plat Book 8, Pages 79-82 of the public records of Columbia County, Florida; thence North 86° 47' 10" East, along the South line of said Crosswinds Phase 1 and then the South line of Crosswinds Phase 2, a distance of 596.83 feet to the Northwest corner of Lot 1, WINDSWEPT INDUSTRIAL SUBDIVISION UNIT 4, a subdivision recorded in Plat Book 9, Pages 121-122 of the public records of Columbia County, Florida; thence South 04° 22' 22" East, along the West line of said Lot 1, WINDSWEPT INDUSTRIAL SUBDIVISION UNIT 4, a distance of 738.39 feet to the Southeast corner of said Lot 1, WINDSWEPT INDUSTRIAL SUBDIVISION UNIT 4; thence South 85° 38' 14" West, along the North right-of-way line of SW Windswept Glen, a distance of 219.53 feet to a point on a curve concave to the North having a radius of 237.00 feet, a central angle of 35° 04' 30", a chord bearing of South 78° 57' 45" East, and a chord distance of 136.90 feet; thence Northwest along the arc of said curve, being also the North right-of-way line of SW Windswept Glen, a distance of 339.06 feet to the point of reverse curve on a curve concave to the East having a radius of 89.00 feet, a central angle of 230° 13' 36", a chord bearing of South 04° 21' 45" East, and a chord distance of 152.15 feet; thence Westerly, Southerly and then Easterly, along the arc of said curve, being the West right-of-way line of SW Windswept Glen, a distance of 406.16 feet to the point of reverse curve on a curve concave to the South having a radius of 227.00 feet, a central angle of 35° 04' 34", a chord bearing of South 68° 08' 27" West, and a chord distance of 185.56 feet; thence Northeasterly along the arc of said curve, being the South right-of-way line of SW Windswept Glen, a distance of 159.71 feet to the end of said curve; thence North 65° 38' 34" East, along said South right-of-way line of SW Windswept Glen, a distance of 515.39 feet to the Northwest corner of Lot 2, WINDSWEPT INDUSTRIAL SUBDIVISION UNIT 6, a subdivision recorded in Plat Book 9, Pages 178-179, of the public records of Columbia County, Florida; thence South 04° 20' 51" East, along the West line of said Lot 2, WINDSWEPT INDUSTRIAL SUBDIVISION UNIT 6, a distance of 580.07 feet to the POINT OF BEGINNING. Containing 21.44 acres, more or less.



CURVE C1 DATA	CURVE C2 DATA	CURVE C3 DATA
L=139.06	L=406.16	L=138.71
R=227.00	R=93.00	R=227.00
Δ=035°06'01"	Δ=250°13'36"	Δ=035°00'34"
CB=S 78°57'16" E	CB=S 04°21'45" E	CB=S 68°08'27" W
CD=136.90	CD=152.15	CD=136.56

TOTAL ACREAGE = 21.44 ACRES



LEGEND

- CMF=CONCRETE MONUMENT FOUND
- SEC=SECTION
- PLS=PROFESSIONAL LAND SURVEYOR
- COR=CORNER
- P.S.M.=PROFESSIONAL SURVEYOR & MAPPER
- R/W=RIGHT-OF-WAY
- C=CENTER LINE
- LB=LICENSED BUSINESS
- P.O.B.=POINT OF BEGINNING
- IRC=IRON REBAR & CAP
- FD=FOUND
- NO ID=NO IDENTIFICATION
- PRM=PERMANENT REFERENCE MONUMENT
- CI=CURVE DATA
- EOP=EDGE OF PAVEMENT
- L=LENGTH
- Δ=CENTRAL ANGLE
- R=RADIUS
- CB=CHORD BEARING
- CD=CHORD DISTANCE
- NDF=NAIL AND DISK FOUND
- ⊕=MANHOLE, SANITARY SEWER
- FH=FIRE HYDRANT
- VW=VALVE, WATER
- EL=ELEVATION
- INV=INVERT
- PVC=POLYVINYL CHLORIDE

SHEET 2 OF 2

NORTH FLORIDA PROFESSIONAL SERVICES, INC.
 P.O. BOX 3823
 LAKE CITY, FL 32056
 PH. 386-752-4675
 LIC NO. LB8356

2551 BLAIRSTONE PINES DR.
 TALLAHASSEE, FL 32301
 WWW.NFPS.NET